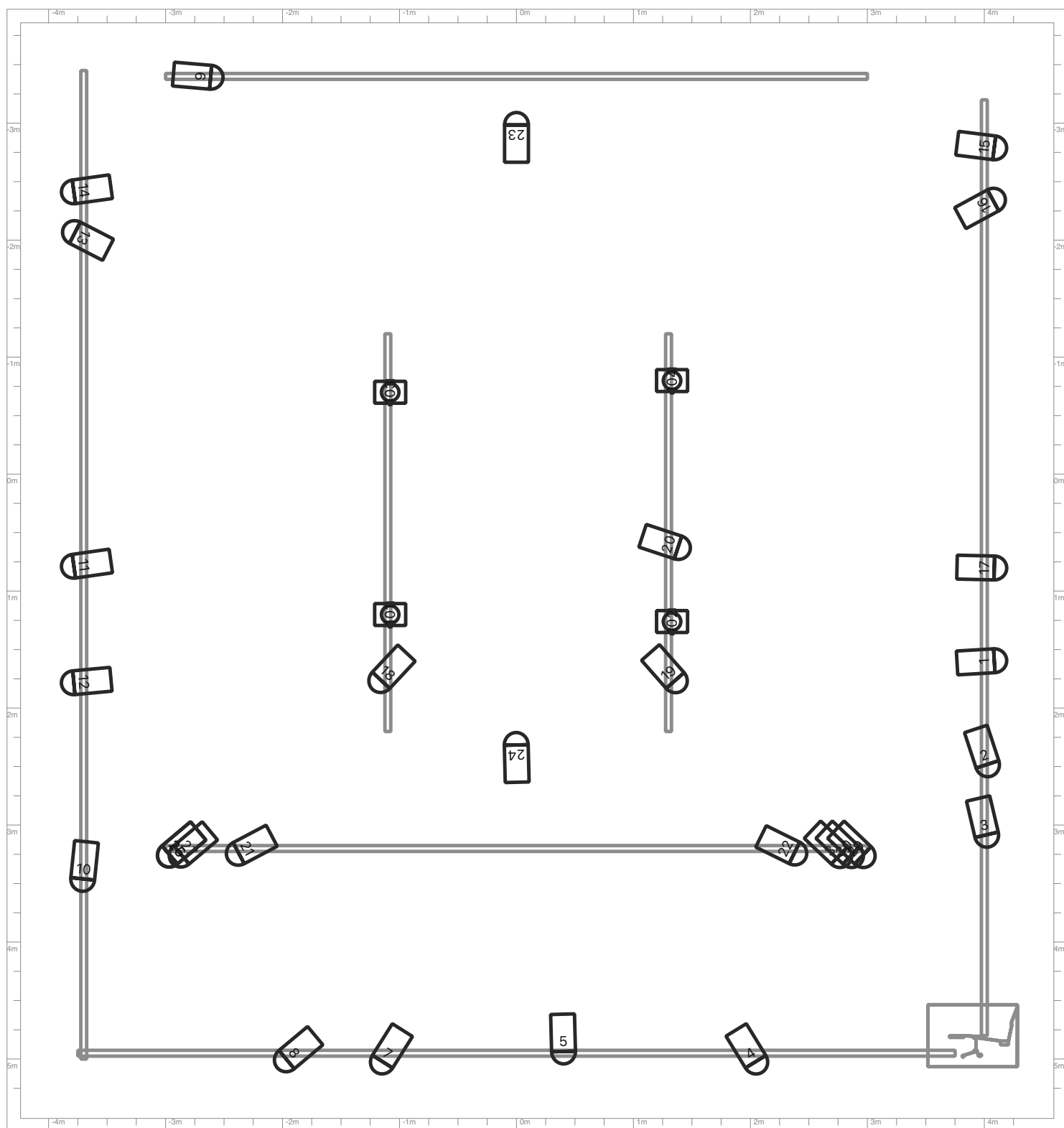


Plan ZDCH zkusebna : Flown Plot Heads



Mix světla: ChamSys MQ80, nyní 4x Univers
 Dimmer NOVA 24x po 1KW
 Rozvod DMX všude po zkušebně
 Lamy: FHR 1000 19x
 PAR64 3x
 Vana CHR1000 2x jako Sál

Mix zvuk: Allen&Heath MixWizard WZ 12:2
 Tascam SS-R100 2x
 Tascam MD-CD1 MKIII 1x

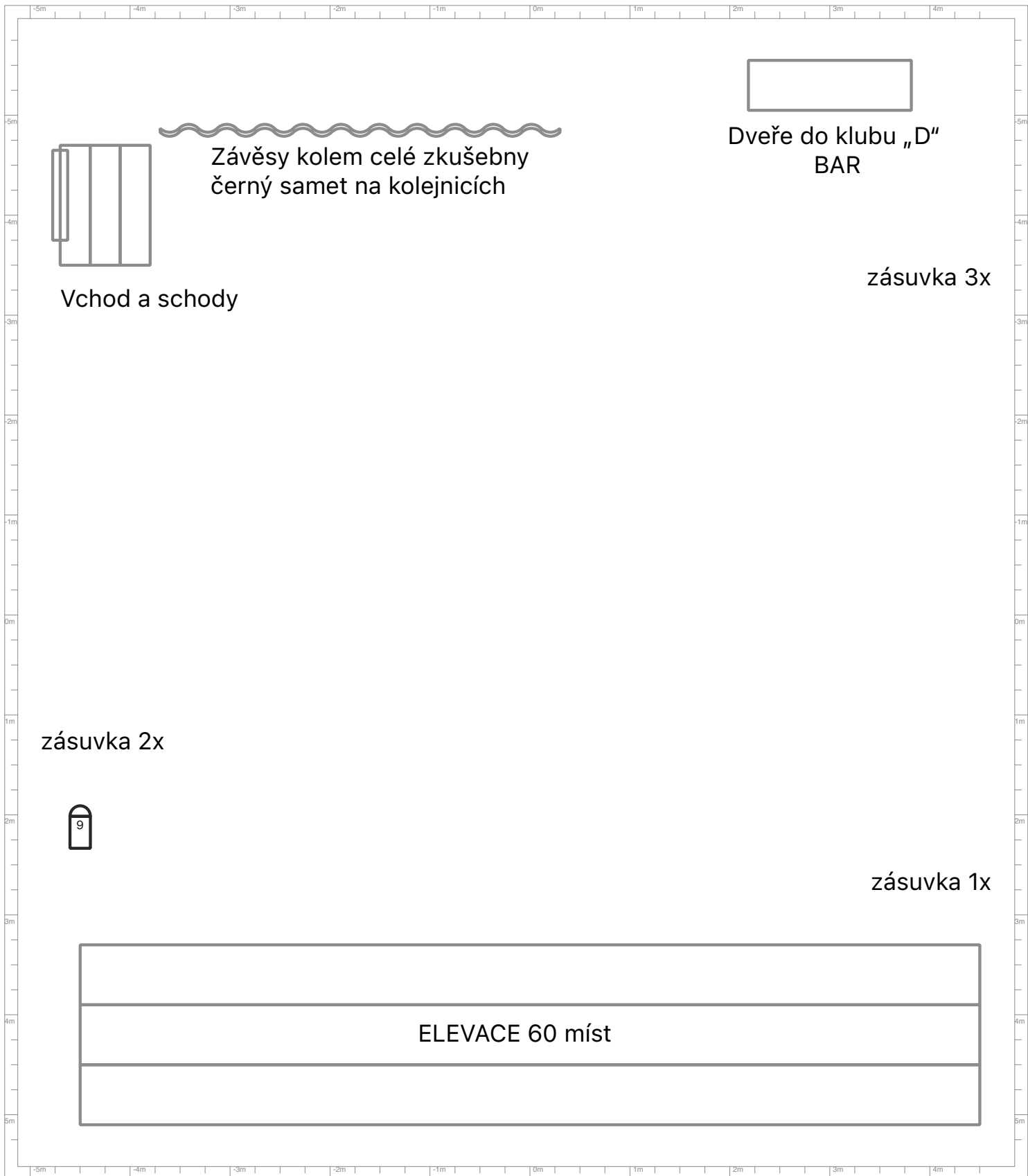
Ozvučení: vršky EW EKX-12 2x
 bass RCF SUB 8003-AS II 1x

Zkušebna se nachází v budově naproti Divadlu v 1. patře (bez výtahu)

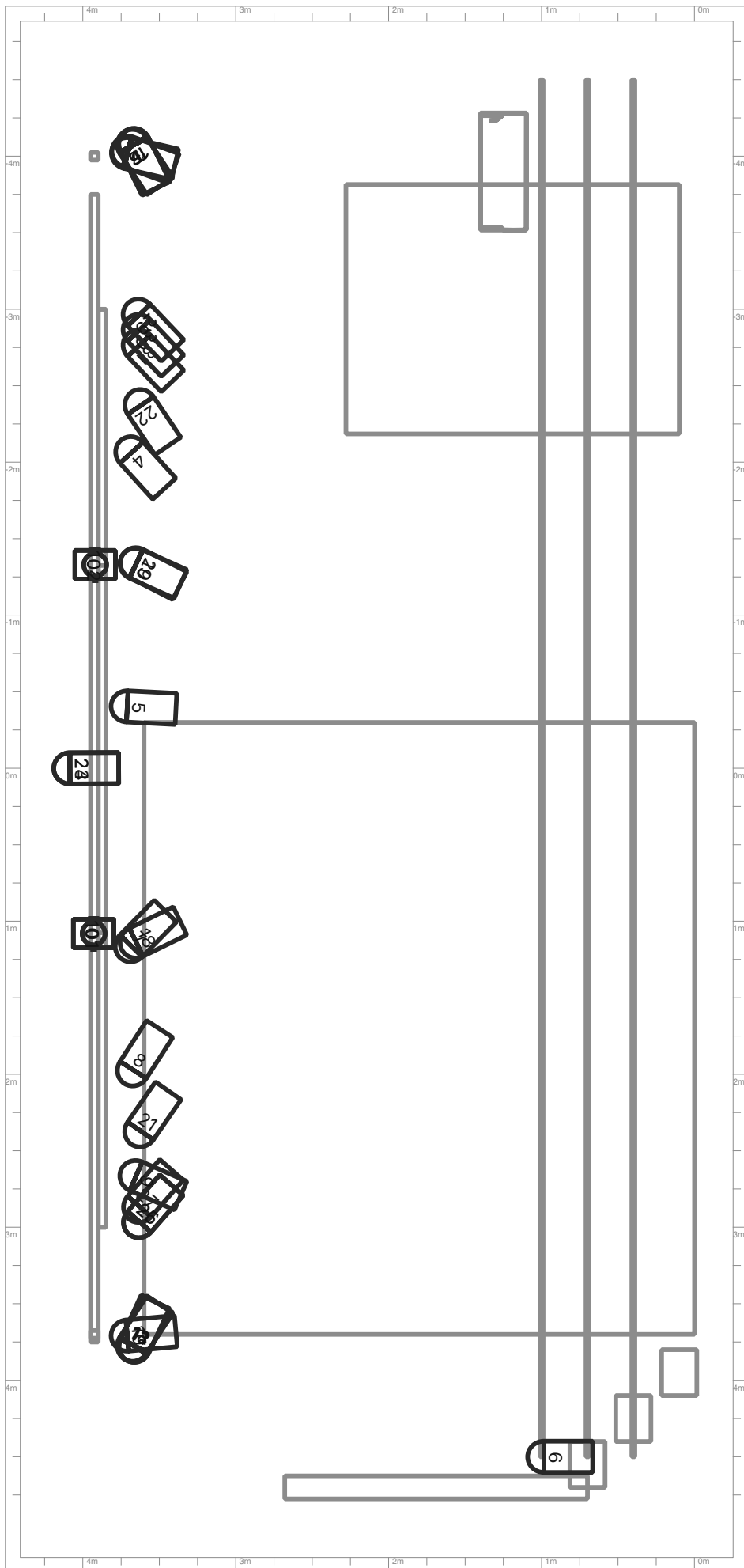
Počet míst k sezení: 60

Po obvodu vykrytí černým sametem, který je na kolejnicích
 Černá dřevěná podlaha

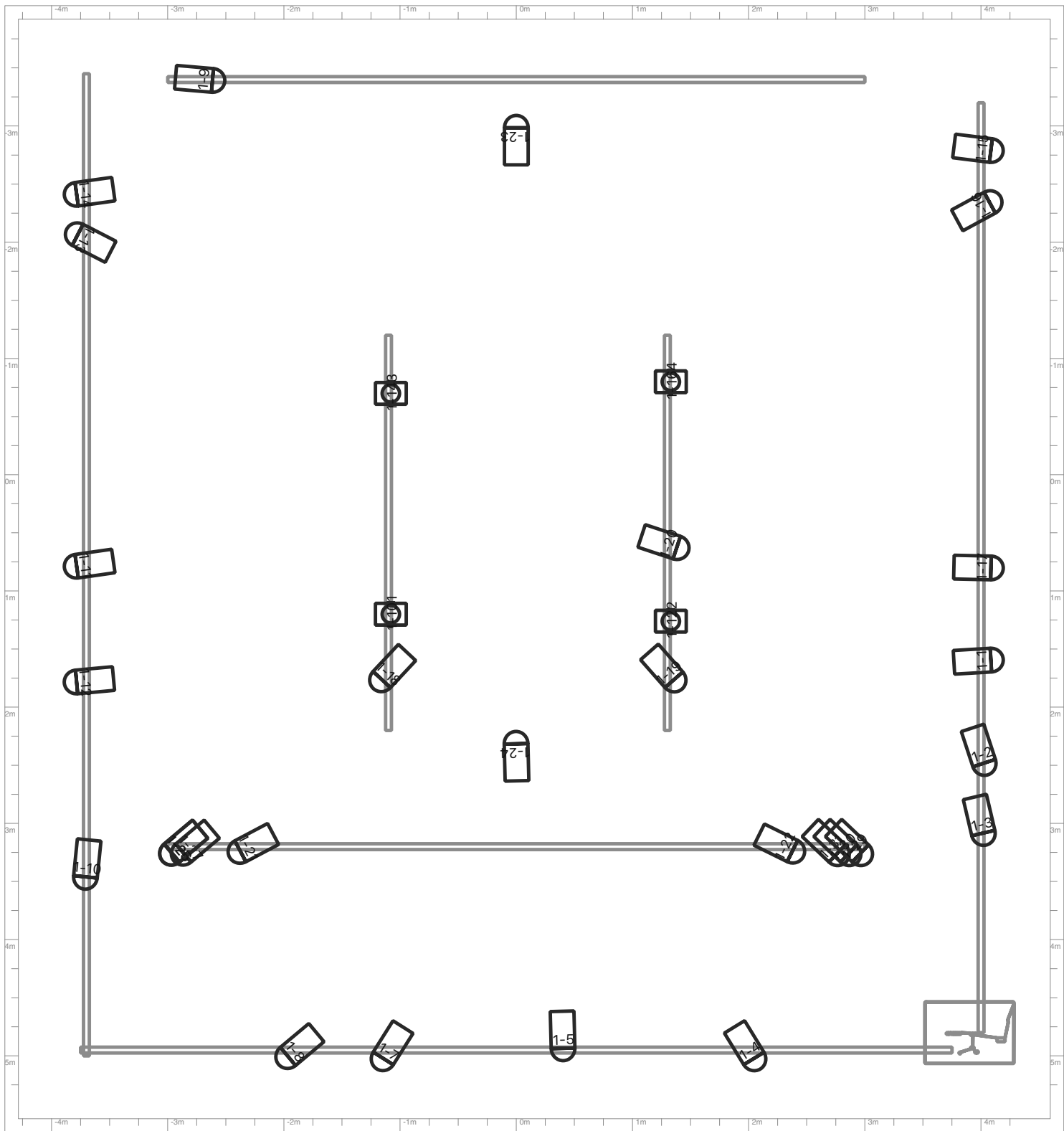
Plan ZDCH zkusebna : Floor Plot Heads



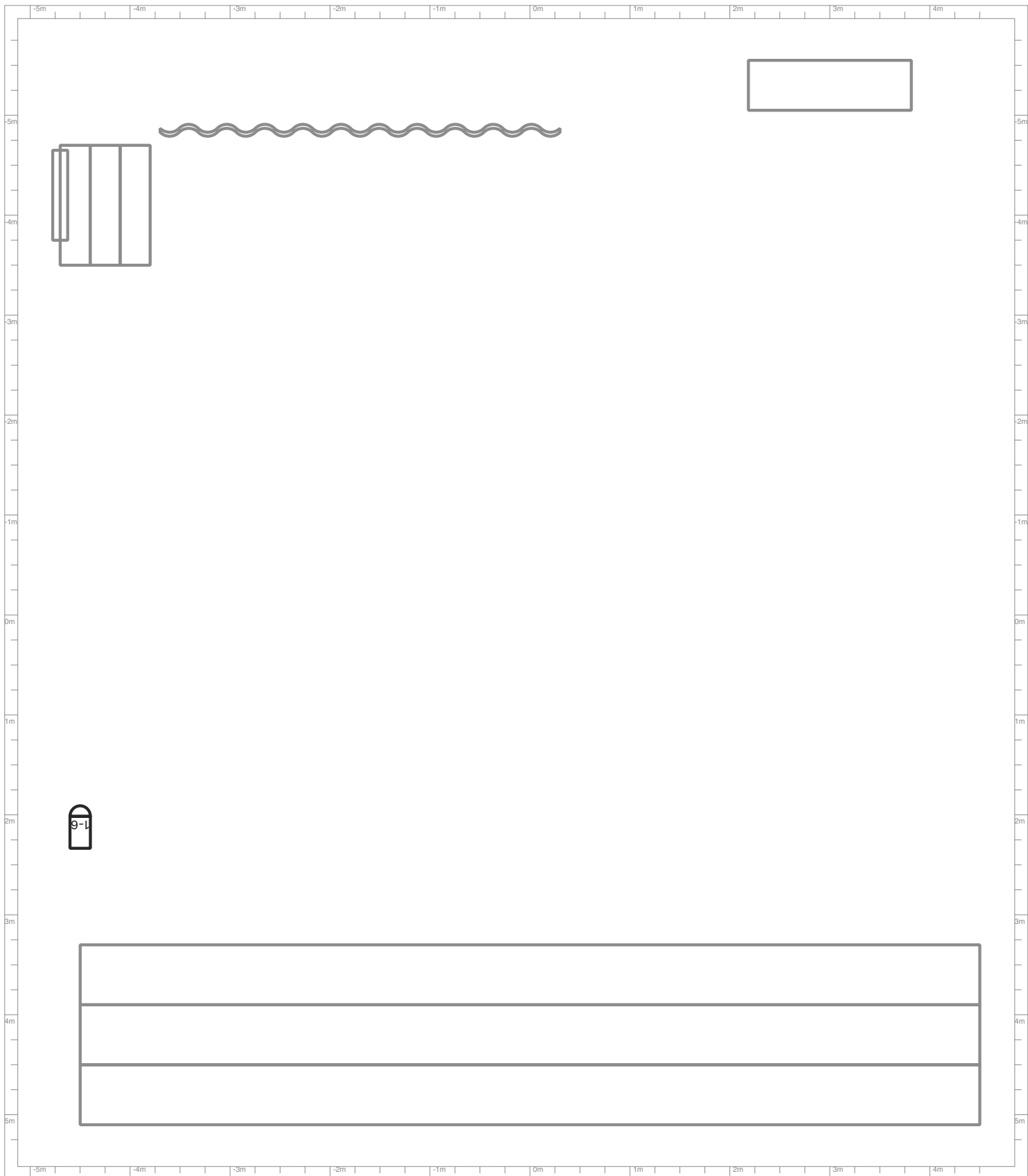
Plan ZDCH zkusebna : Front Plot Heads



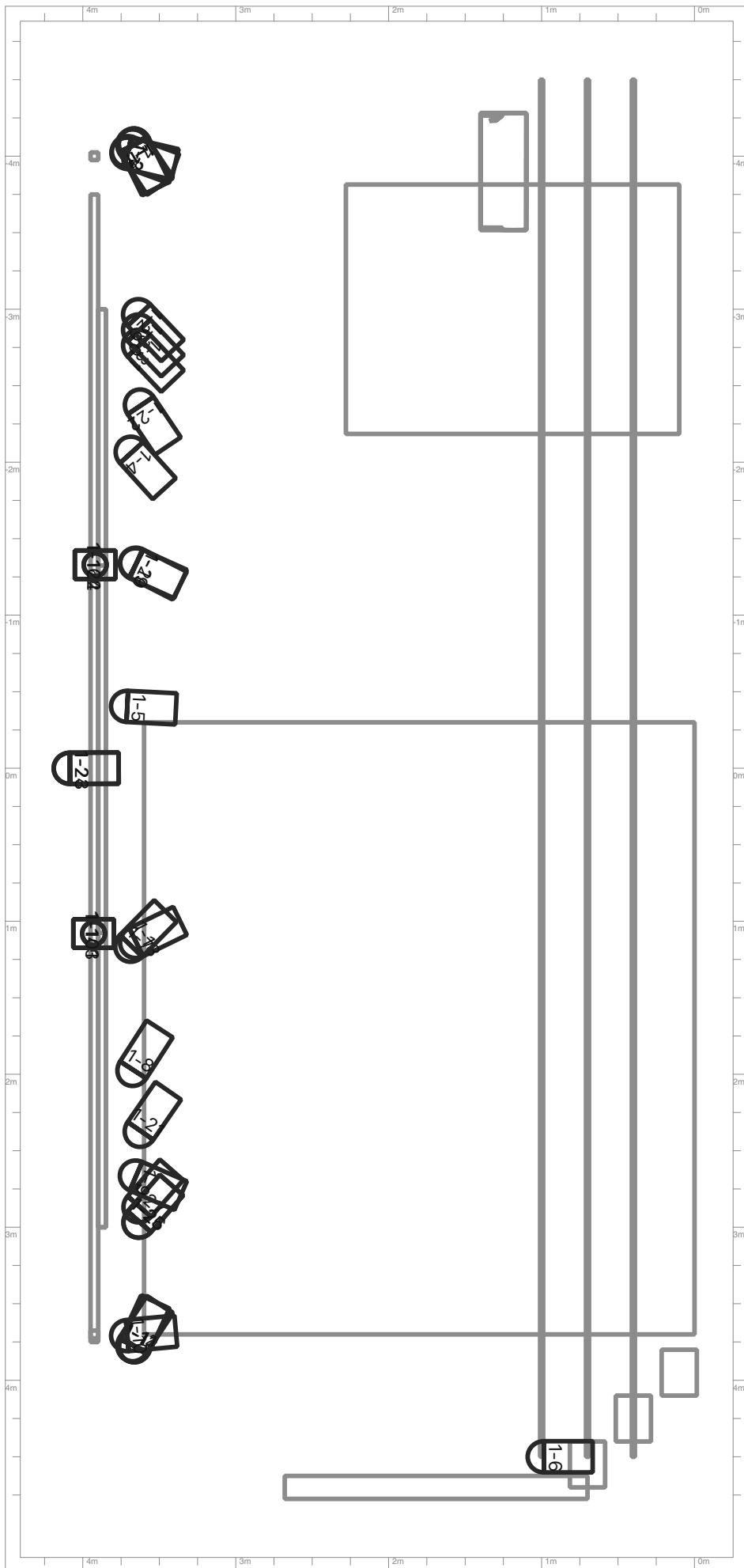
Plan ZDCH zkusebna : Flown Plot DMX



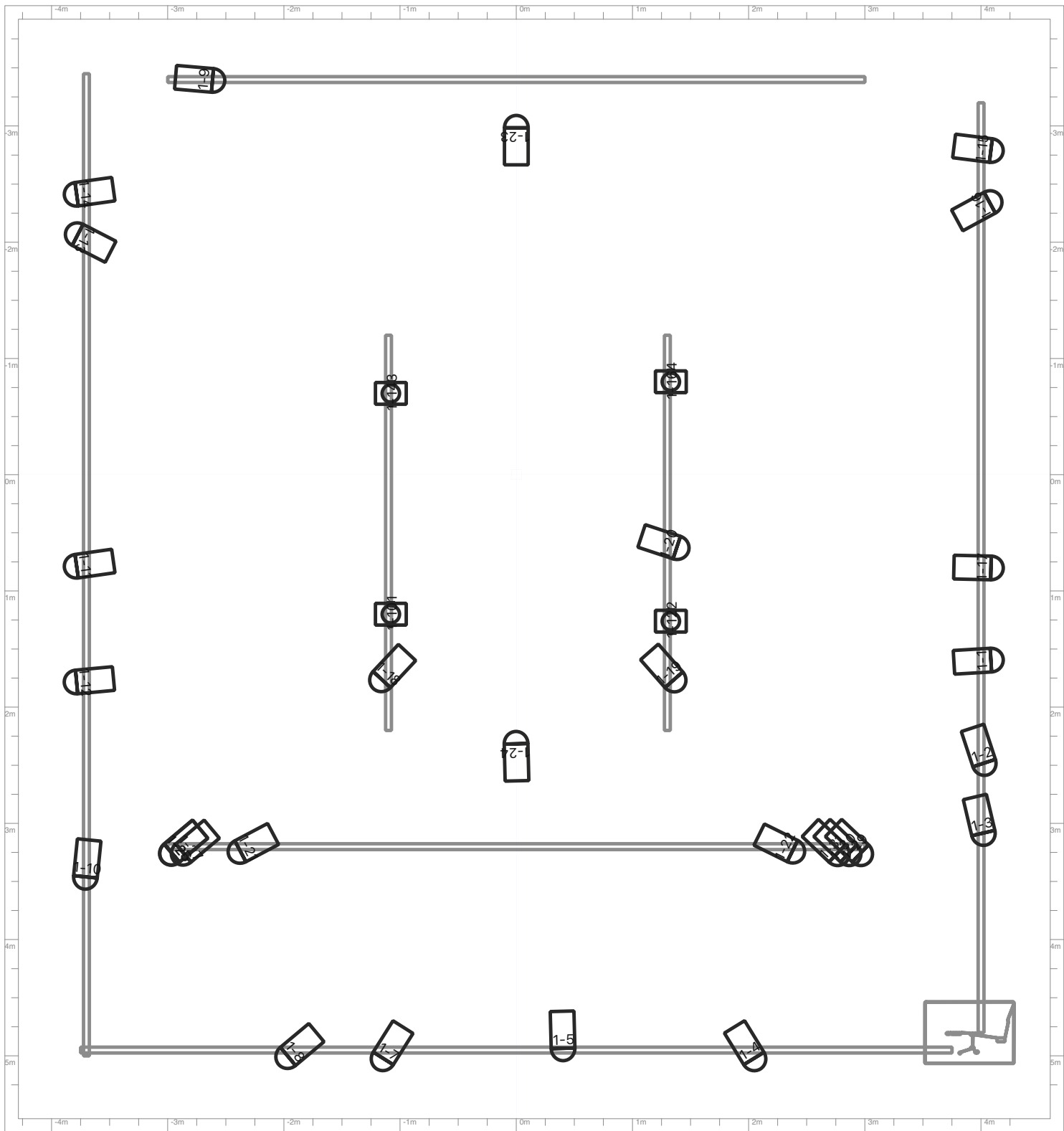
Plan ZDCH zkusebna : Floor Plot DMX



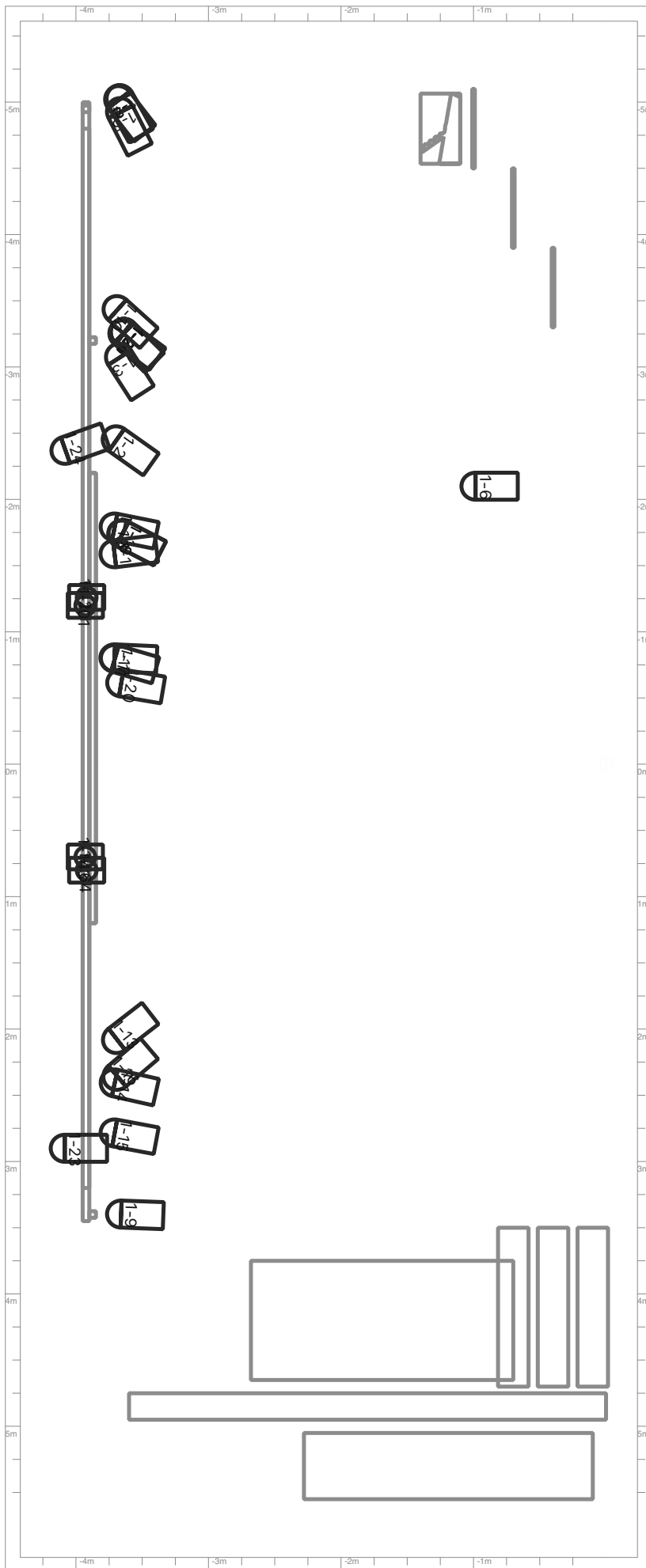
Plan ZDCH zkusebna : Front Plot DMX



Plan ZDCH zkusebna : Rigging Plan

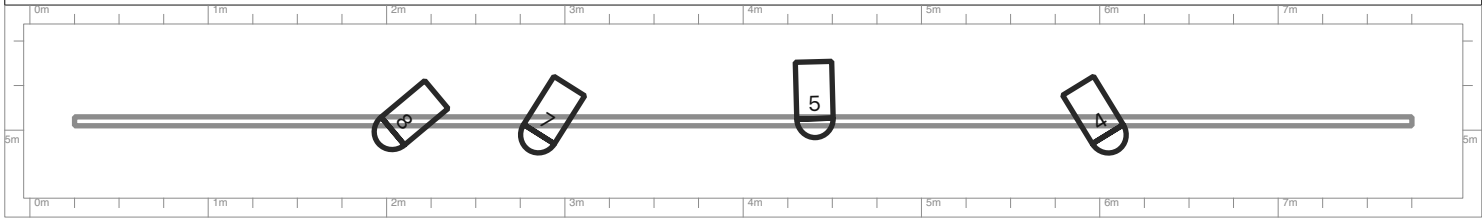


Plan ZDCH zkusebna : Rigging Side Elevation

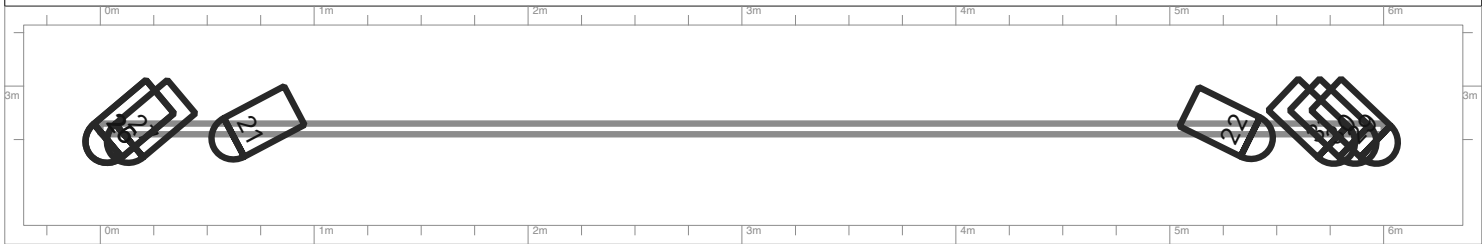


Plan ZDCH zkusebna : Position Plots

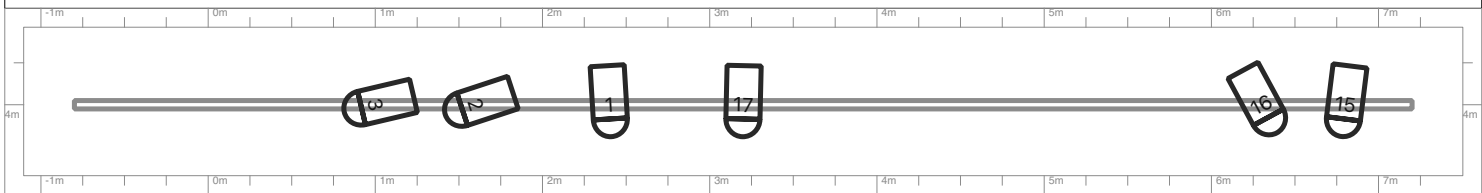
Attach Object: Tyc u oken



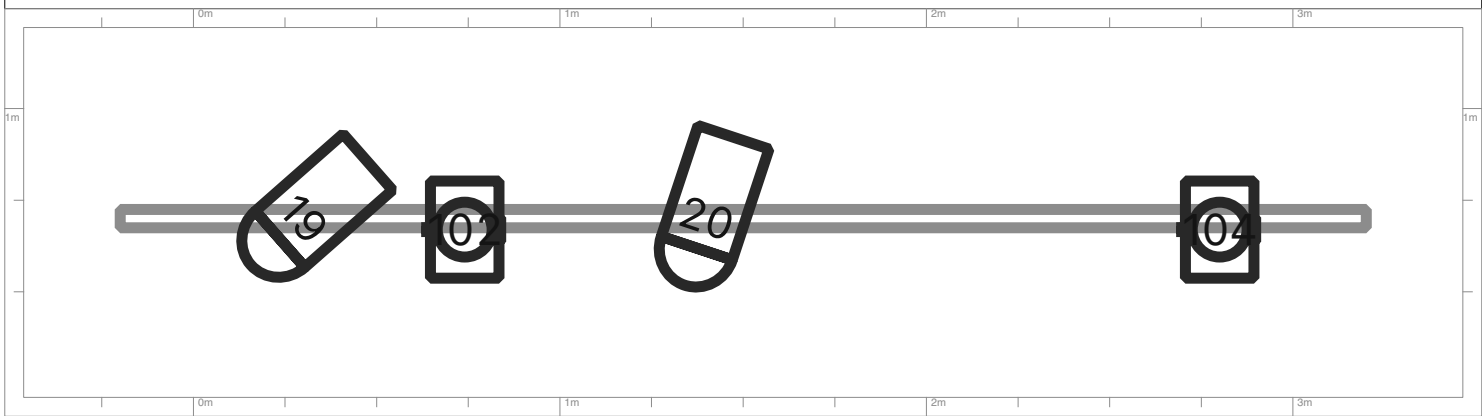
Attach Object: Tyc2.od horizon



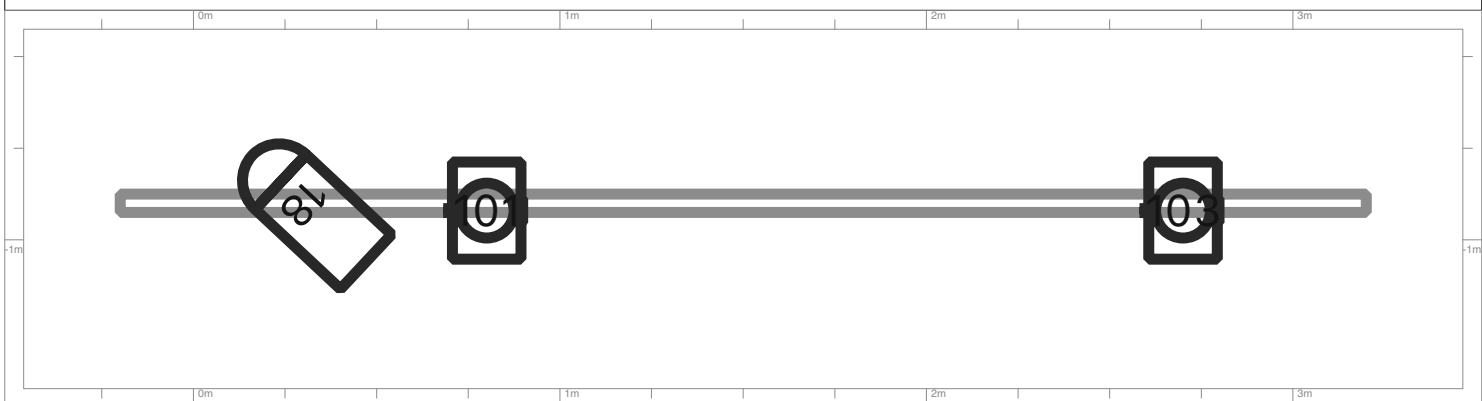
Attach Object: Tyc4. Prava



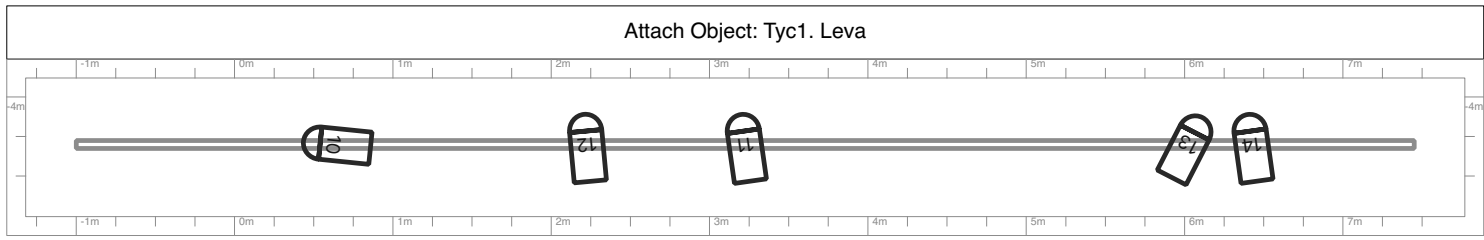
Attach Object: Tyc3. s HL. 2a4



Attach Object: Tyc2.s HL. 1a3



Plan ZDCH zkusebna : Position Plots



Plan ZDCH zkusebna : Fixture Patch

Head No	DMX	Position	Hang	Manufacturer	Model	Mode
101	01-101	Tyc2.s HL. 1a3	Top Front	Chauvet	RogueR1BW	21ch
102	01-122	Tyc3. s HL. 2a4	Top Front	Chauvet	RogueR1BW	21ch
103	01-143	Tyc2.s HL. 1a3	Top Front	Chauvet	RogueR1BW	21ch
104	01-164	Tyc3. s HL. 2a4	Top Front	Chauvet	RogueR1BW	21ch

Plan ZDCH zkusebna : Fixture Patch

Head No	Head Name	Beam Angle	Gel	Position	Hang	DMX	DMX	DMX	DMX	DMX	DMX
1	Forbina L.			Tyc4. Prava		01-001					
2	Strana P.			Tyc4. Prava		01-002					
3	Strana P. zadel			Tyc4. Prava		01-003					
4	Modra 4		Blue	Tyc u oken		01-004					
5	Zehlicka			Tyc u oken		01-005					
6	zasuvka 107					01-006					
7	Modra 7		Blue	Tyc u oken		01-007					
8	Strana P.X			Tyc u oken		01-008					
9	Par Dvere			Tyc u horizontu		01-009					
10	Strana L.		White	Tyc1. Leva		01-010					
11	Pruvan Stred			Tyc1. Leva		01-011					
12	Forbina P.			Tyc1. Leva		01-012					
13	Contra P.			Tyc1. Leva		01-013					
14	Zadek P.			Tyc1. Leva		01-014					
15	Zadek L.		White	Tyc4. Prava		01-015					
16	Contra L.		White	Tyc4. Prava		01-016					
17	Pruvan Stred			Tyc4. Prava		01-017					
18	Stred P.			Tyc2.s HL. 1a3		01-018					
19	Stred L.		White	Tyc3. s HL. 2a4		01-019					
20	Par stred		L201	Tyc3. s HL. 2a4		01-020					
21	Strana L.cela		White	Tyc2.od horizon		01-021					
22	Strana P.cela		White	Tyc2.od horizon		01-022					
23	SAL jevisle		White			01-023					
24	SAL hlediste					01-024					
25	parLED L.		Red	Tyc2.od horizon		01-025					
26	parLED L.		Green	Tyc2.od horizon		01-026					
27	parLED L.		Blue	Tyc2.od horizon		01-027					
28	parLED L.Dim					01-028					
29	parLED P.		Red	Tyc2.od horizon		01-029					
30	parLED P.		Green	Tyc2.od horizon		01-030					
31	parLED P.		Blue	Tyc2.od horizon		01-031					
32	parLED P.Dim					01-032					
33	BAR L.		Red			01-033					
34	BAR L.		Green			01-034					
35	BAR L.		Blue			01-035					
36	BAR L.		White			01-036					
37	BAR L.		Orange			01-037					
38	BAR L.		DarkViolet			01-038					
39	BAR S.		Red			01-039					
40	BAR S.		Green			01-040					
41	BAR S.		Blue			01-041					
42	BAR S.		White			01-042					
43	BAR S.		Orange			01-043					
44	BAR S.		DarkViolet			01-044					
45	Bar P.		Red			01-045					
46	Bar P.		Green			01-046					
47	Bar P.		Blue			01-047					
48	Bar P.		White			01-048					
49	Bar P.		Orange			01-049					
50	Bar P.		DarkViolet			01-050					

Plan ZDCH zkusebna : Truss and Pipes

Name	Position	Size	Weight of fixtures	DMX Universes
Zkusebna	(0.0, 0.0) 0.0	(10.3x4.6x9.0)	0.0	
Tyc1. Leva	(-3.7, 5.0) Trim: 4.0	Length: 8.4 (0.1x0.1)	0.0	
Tyc2.s HL. 1a3	(-1.1, 2.2) Trim: 3.9	Length: 3.4 (0.1x0.1)	11.8	1
Tyc3. s HL. 2a4	(1.3, 2.2) Trim: 3.9	Length: 3.4 (0.1x0.1)	11.8	1
Tyc4. Prava	(4.0, 4.8) Trim: 4.0	Length: 8.0 (0.1x0.1)	0.0	
Tyc u horizontu	(-3.0, -3.4) Trim: 3.9	Length: 6.0 (0.1x0.1)	0.0	
Tyc2.od horizon	(-3.0, 3.2) Trim: 3.9	Length: 6.0 (0.1x0.1)	0.0	
Tyc u oken	(-3.8, 4.9) Trim: 4.0	Length: 7.5 (0.1x0.1)	0.0	
Samet1 Horizont	(-1.7, -4.8) 0.0	(0.2x3.6x4.0)	0.0	
Dvere do Baru	(3.0, -5.3) 0.1	(0.5x2.2x1.6)	0.0	
Dvere vchod	(-4.7, -4.2) 0.7	(0.2x2.0x0.9)	0.0	
schod1 horni	(-4.7, -4.1) 0.7	(0.2x0.3x1.2)	0.0	
schod2	(-4.4, -4.1) 0.4	(0.2x0.3x1.2)	0.0	
schod3 dolni	(-4.1, -4.1) 0.1	(0.2x0.3x1.2)	0.0	
Elevace1 horni	(0.0, 4.5) 1.0	(0.0x0.6x9.0)	0.0	
Elevace2 stred	(0.0, 3.9) 0.7	(0.0x0.6x9.0)	0.0	
Elevace3 dole	(0.0, 3.3) 0.4	(0.0x0.6x9.0)	0.0	
Chamsys MQ80	(3.9, 4.8) 1.1	(0.0x0.0x0.0)	0.0	

Weights include only fixtures for which the weight is specified in MagicQ. The indicated weight does not include rigging, cabling or the truss itself.